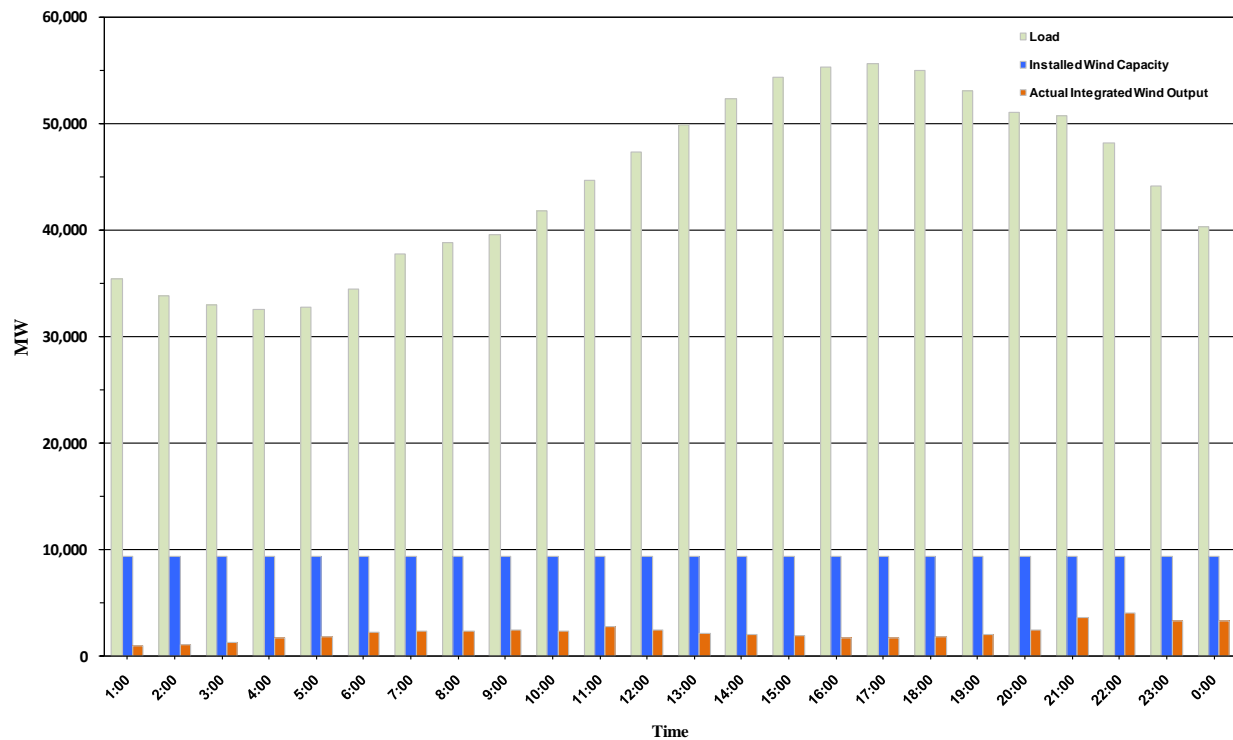




ERCOT Grid Operations Wind Penetration Report: 09/09/10

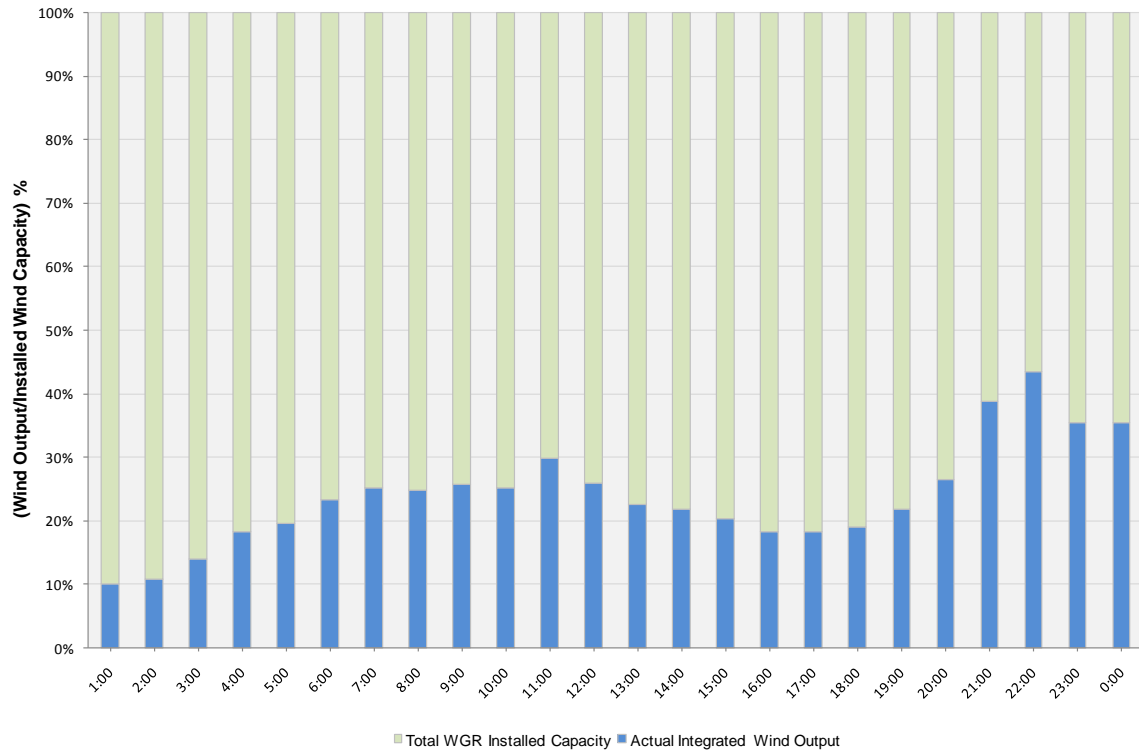
Peak Load	55,645 MW
Load Peak Hour	17
Wind Record 06/12/10	7016 MW
Max Wind value	4175 MW
Wind Peak Hour	20:50:16
Wind Penetration %	8.29

Hourly Average Actual Load vs. Actual Wind Output
09-09-2010

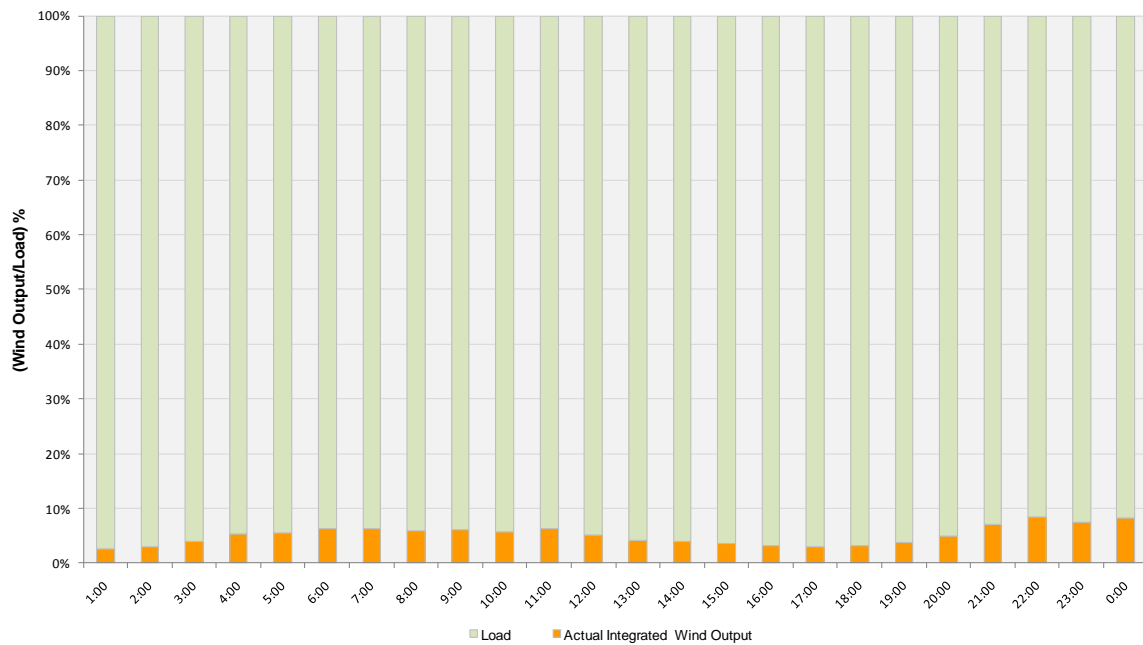




Actual Wind Output as a Percentage of the Total Installed Wind Capacity
09-09-2010



Actual Wind Output as a Percentage of the ERCOT Load
09-09-2010





ERCOT Load vs. Actual Wind Output 09/02/10 - 09/09/10

